

## Wood Close, , London, E2 6ET

- 3 Bedrooms
- Share Of Freehold
- Top Floor
- 2 Bathrooms
- Secure Gated Development
- Centrally Located

**£700,000**



# Wood Close, , London, E2 6ET

## DESCRIPTION

A top-floor three-bedroom, two-bathroom apartment, tucked inside a quiet, gated modern development just a stone's throw from the ever-vibrant Brick Lane.

Sitting at the top of the building, the flat enjoys great natural light and an elevated sense of privacy. Inside, the décor is simple, clean, and well-kept—a blank canvas ready for someone with vision, or perfectly move-in-ready for those who prefer low-maintenance living.

The layout offers three comfortable bedrooms, two practical bathrooms (ideal for sharers or growing families), and an open-plan living area with enough space to cook, relax, and entertain.

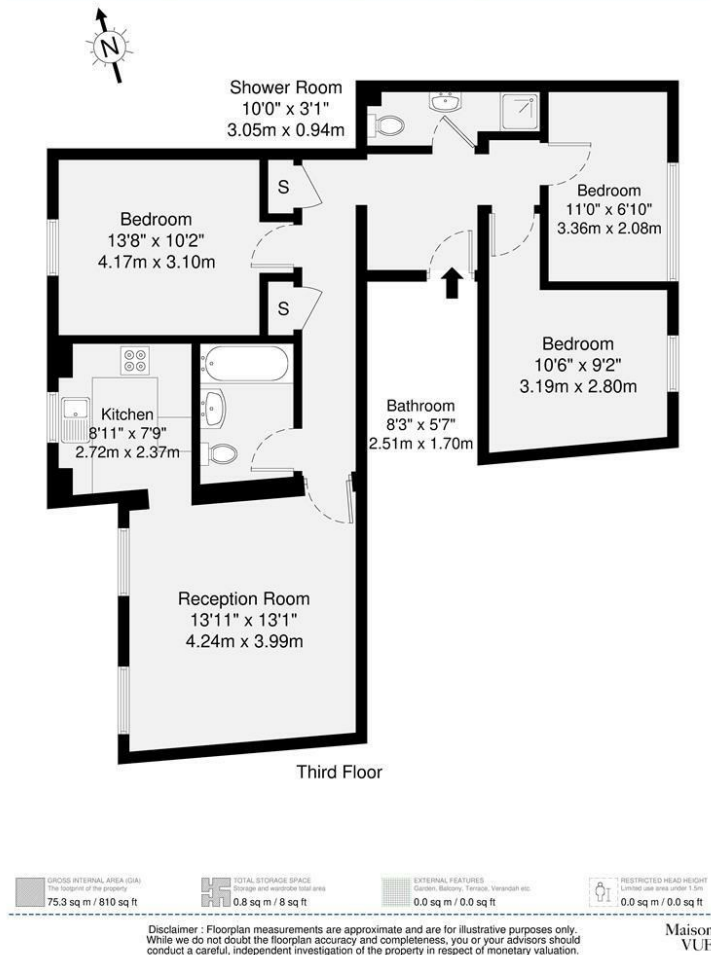
Outside, the gated setting adds a welcome feeling of security and exclusivity, while the location puts you at the heart of East London's creative buzz—think artisan coffee, eclectic markets, vintage boutiques, and transport links galore.

A top-floor retreat with unbeatable convenience and plenty of potential. Perfect for first-time buyers, landlords, or anyone wanting a home on the doorstep of everything Shoreditch has to offer.









### Viewings

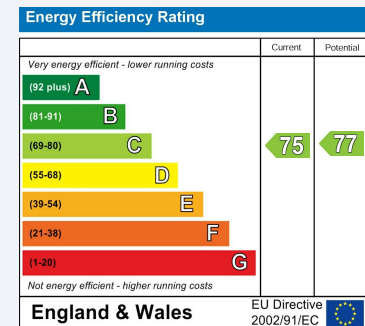
Please contact [shoreditch@hunters.com](mailto:shoreditch@hunters.com), if you wish to arrange a viewing appointment for this property or require further information.

### Valuations

For a valuation of your property, please email the team with your property details, contact information and the times you are available.

## ENERGY PERFORMANCE CERTIFICATE

The energy efficiency rating is a measure of the overall efficacy of a home. The higher the rating the more energy efficient the home is and the lower the fuel bills will be.



These particulars are intended to give a fair and reliable description of the property but no responsibility for any inaccuracy or error can be accepted and do not constitute an offer or contract. We have not tested any services or appliances (including central heating if fitted) referred to in these particulars and the purchasers are advised to satisfy themselves as to the working order and condition. If a property is unoccupied at any time there may be reconnection charges for any switched off/disconnected or drained services or appliances - All measurements are approximate.

**THINKING OF SELLING?** If you are thinking of selling your home or just curious to discover the value of your property, Hunters would be pleased to provide free, no obligation sales and marketing advice. Even if your home is outside the area covered by our local offices we can arrange a Market Appraisal through our national network of Hunters estate agents.